



Transmitters and accessories





Technology Security Practicality



TECHNOLOGICAL SOLUTIONS FOR SECURE OPERATION

V2 offers a vast range of transmitters combining sought-after design and great performance:

- **Variable code transmission to prevent unauthorised duplication** and models available with 2 operating frequencies (433.92 and 868.30 MHz);
- **Unambiguous and exclusive serial codes**, to protect the installer and the end customer;
- **Possibility of interfacing with management software (WINPPCL)** capable of creating a replacement transmitter that automatically replaces the lost one without the latter further working on the system;
- **Lithium batteries** for high reliability in terms of time.



PRACTICAL SOLUTIONS FOR PROBLEM-FREE USE

The Rolling Code transmitters in the PHOX series (433.92 - 868.30 MHz) have:

- **Compact dimensions** (32.4x63.2x8.41 cm)
- **Big, ergonomic keys** to facilitate use and prevent accidental activation.
- **Access to the battery compartment** designed to allow stack change in a few seconds



In 433.92 MHz transmitters in the MATCH series (fixed code copier), each button works independently, **therefore on a single MATCH you can save the code of four different transmitters!**



DEV-R1

Miniature receiver module to control a single-phase asynchronous motor
433.92 - 868.30 MHz



DEV-R2

Miniature receiver module for a load up to 500W.
433.92 - 868.30 MHz



DEV-T1

Miniature transmitter module
433.92 - 868.30 MHz
Rolling Code



TRANSMITTERS AND ACCESSORIES

phox

Personal Pass transmitter

433.92 - 868.30 MHz
rolling code



433.92 MHz

868.30 MHz

PLUS

- Rolling code transmission
- 433.92 MHz and 868.30 MHz version
- 2-button and 4-button version, programmable or factory set
- Possibility to obtain up to 14 channels by combining the pressure of multiple buttons
- Programming via radio through Flash-prog and Winppcl without having to remove the transmitter from the single box
- Possibility of programming - using Winppcl - spare transmitters able to replace transmitters previously stored on the system
- Available in multi-colour packs: 10 transmitters in 5 different colours (2 transmitters per colour)

TECHNICAL FEATURES

MODEL	PHOX2-433	PHOX2P-433	PHOX4-433	PHOX4P-433	PHOX2-868	PHOX2P-868	PHOX4-868	PHOX4P-868
CODE	10V001	10V002	10V003	10V004	10V005	10V006	10V007	10V008
Frequency (MHz)	433.92	433.92	433.92	433.92	868.30	868.30	868.30	868.30
Buttons	2	2	4	4	2	2	4	4
Factory set	•		•		•		•	
To serialize		•		•		•		•
Range in open field (m)	350				250			
Power supply (battery type)	Lithium 3V (CR2032)							
Max. absorption (mA)	< 10							
Dimensions (mm)	32.4 x 63.2 x 9.8							



MULTI-COLOUR PACK



10 PCS 5 COLOURS

433.92 MHz					
868.30 MHz					



MODEL	PHOX2-433	PHOX2P-433	PHOX4-433	PHOX4P-433	PHOX2-868	PHOX2P-868	PHOX4-868	PHOX4P-868
CODE	10V501	10V502	10V503	10V504	10V505	10V506	10V507	10V508



TRANSMITTERS AND ACCESSORIES

keho

Personal Pass transmitter

433.92 MHz
rolling code



PLUS

- Rolling code transmission
- Possibility to obtain up to 14 channels by combining the pressure of multiple buttons
- Programming via radio through Flash-prog and Winppcl without having to remove the transmitter from the single box
- Possibility of programming - using Winppcl - spare transmitters able to replace transmitters previously stored on the system

TECHNICAL FEATURES

MODEL	KEHO4-433	KEHO4P-433
CODE	10R101	10R102
Frequency (MHz)	433,92	433,92
Factory set	•	
To serialize		•
Range in open field (m)	300	
Power supply (battery type)	Lithium 3V (CR2032)	
Max. absorption (mA)	< 10	
Dimensions (mm)	38 x 73 x 10	



match

Royal transmitter and copier for fixed codes

433.92 MHz
Royal / 53200 code



PLUS

- Ideal to copy all the fixed code transmitters transmitting at 433.92MHz
- Quick, easy programming
- Available in two different colours
- Each button operates independently, so a single MATCH transmitter can store the code of four different transmitters
- Every button is already configured with a ROYAL type code at 20 bit; therefore, MATCH can be used immediately like a regular transmitter
- Possibility to configure the transmission code as 53200 at 12 bit

TECHNICAL FEATURES

MODEL	MATCH-W	MATCH-B
CODE	10R005	10R006
Frequency (MHz)	433.92	433.92
Colour	white	black
Range in open field (m)	300	
Power supply (battery type)	Lithium 3V (CR2032)	
Max. absorption (mA)	< 8	
Dimensions (mm)	38 x 73 x 10	



tmu100

100-channel Personal Pass transmitter with display

433.92 MHz
rolling code



PLUS

- Rolling code transmission
- 100 available channels
- Each channel can transmit 2 different commands (OPEN or CLOSE)
- Display to select the channels and the programming steps
- Possibility to program the favourite channel
- Possibility to set the last channel, useful when not using all 100 channels
- Low battery warning
- Ongoing transmission signal

TECHNICAL FEATURES

MODEL	TMU100
CODE	10M003
Frequency (MHz)	433.92
Range in open field (m)	300
Power supply (battery type)	2 x Lithium 3V (CR2032)
Max. absorption (mA)	< 10
Dimensions (mm)	52 x 124 x 20



pmr

Wall-mounted Personal Pass transmitter

433.92 MHz
rolling code



PLUS

- Rolling code transmission
- Working range of up to 20 m in closed environments, passing through even 2 main walls, and 200 m in the open

TECHNICAL FEATURES

MODEL	PMR2	PMR4
CODE	10K001	10K004
Frequency (MHz)	433.92	433.92
Buttons	2	4
Range in open field (m)	200	
Power supply (battery type)	Lithium 3V (CR2032)	
Max. absorption (mA)	10	
Dimensions (mm)	70 x 70 x 17	



wally

12/24V outdoor receiver

433.92 - 868.30 MHz
Personal Pass / Royal



PLUS

- Operates with Royal or Personal Pass series transmitters: the first remote control to be memorised determines the mode of operation; Royal or Personal Pass
- 433.92 MHz and 868.30 MHz version
- 1, 2 and 4 channel version
- Monostable, bistable or timer operating logic
- Possibility to store up to 1008 different codes
- Sequential storage of transmitters
- Memory full warning
- Self-learning of transmitters managed by radio
- Management of the replacement transmitter
- It is possible to enable or disable the ROLLING CODE mode
- Basic programming using button P1 or advanced programming using the PROG2 programming device and WINPPCL software
- Plug-in terminal board

TECHNICAL FEATURES

MODEL	WALLY1-U-433	WALLY2-U-433	WALLY4-U-433	WALLY1-U-868	WALLY2-U-868	WALLY4-U-868
CODE	11G050	11G051	11G052	11G053	11G054	11G055
Frequency (MHz)	433.92	433.92	433.92	868.30	868.30	868.30
Channels	1	2	4	1	2	4
Power supply	12 - 24 Vac / 12 - 36 Vdc					
Absorption in stand-by (mA)	16 @ 24 Vdc					
Relay contacts (A)	1 @ 30 Vdc					
Sensibility	≥ -103 dBm					
S/N	> 17dB @ 100dBm m=100%					
Working temperature (°C)	-20 ÷ +60°C					
Protection degree (IP)	55					
Dimensions (mm)	132 x 26 x 74					



mr2

Plug-in receiver module for V2 control units

433.92 - 868.30 MHz
Personal Pass / Royal



PLUS

- Operates with Royal or Personal Pass series transmitters: the first remote control to be memorised determines the mode of operation; Royal or Personal Pass
- 433.92 MHz and 868.30 MHz version
- 4 programmable channels with monostable, bistable or timer operating logics
- Possibility to store up to 1008 different codes
- Sequential storage of transmitters
- Memory full warning
- Self-learning of transmitters managed by radio
- Management of the replacement transmitter
- It is possible to enable or disable the ROLLING CODE mode
- Basic programming using button P1 or advanced programming using the PROG2 programming device and WINPPCL software

TECHNICAL FEATURES

MODEL	MR2-U-433	MR2-U-868
CODE	11B047	11B048
Frequency (MHz)	433.92	868.30
Sensibility	≥ -103 dBm	
S/N	> 17dB @ 100dBm m=100%	
Working temperature (°C)	-20 ÷ +60°C	
Dimensions (mm)	52 x 35 x 15	



wally2-230V

230V outdoor receiver

433.92 - 868.30 MHz
Personal Pass / Royal



PLUS

- Operates with Royal or Personal Pass series transmitters: the first remote control to be memorised determines the mode of operation; Royal or Personal Pass
- 433.92 MHz and 868.30 MHz version
- 2 programmable channels with monostable, bistable or timer operating logics
- Power relay for loads up to 1500W
- Possibility to store up to 240 different codes
- Sequential storage of transmitters
- Memory full warning
- Self-learning of transmitters managed by radio
- Management of the replacement transmitter
- It is possible to enable or disable the ROLLING CODE mode
- Basic programming using button P1 or advanced programming using the PROG2 programming device and WINPPCL software

TECHNICAL FEATURES

MODEL	WALLY2-230V	WALLY2-230V-868
CODE	11D012	11D014
Frequency (MHz)	433.92	868.30
Power supply (V - Hz)	230 - 50	
Absorption in stand-by (mA)	20	
Relay contacts (A)	10 (@ 250Vac)	
Sensibility	≥ -103 dBm	
S/N	> 17dB @ 100dBm m=100%	
Working temperature (°C)	-20 ÷ +60	
Protection degree (IP)	55	
Dimensions (mm)	113 x 113 x 57	



rxp4

24V outdoor receiver with display

433.92 - 868.30 MHz
Personal Pass / Royal



PLUS

- Programming achieved using 3 program buttons and display
- Operates with Royal or Personal Pass series transmitters: the first remote control to be memorised determines the mode of operation; Royal or Personal Pass
- 433.92 MHz and 868.30 MHz version
- 4 programmable channels with monostable, bistable or timer operating logics
- Relay outputs 2 - 3 - 4 with N.O. or N.C. contact that can be selected using the jumpers
- Possibility to store up to 1008 different codes
- Sequential storage of transmitters
- Memory full warning
- Self-learning of transmitters managed by radio
- Management of the replacement transmitter
- It is possible to enable or disable the ROLLING CODE mode
- Saving data on MR2 removable receiver module
- Data management via PROG2 and WINPPCL by inserting the removable module MR2 into connector TX of PROG2

TECHNICAL FEATURES

MODEL	RXP4-433	RXP4-868
CODE	11D017	11D018
Frequency (MHz)	433.92	868.30
Power supply	12-24 Vac/dc / 12-36 Vdc	
Absorption in stand-by (mA)	16 @ 24 Vdc	
Relay contacts (A)	relè 1 = 5A - 230Vac / relè 2 = 1A - 30Vdc / relè 3 = 1A - 30Vdc / relè 4 = 1A - 30Vdc	
Sensibility	≥ -103 dBm	
S/N	> 17dB @ 100dBm m=100%	
Working temperature (°C)	-20 ÷ +60	
Protection degree (IP)	55	
Dimensions (mm)	170 x 185 x 70	



prog2

Portable programming device



PLUS

- Programming with random codes of blank transmitters
- Connector for memory modules and receivers of the series WALLY/MR2 to view, change, delete (partially or fully) the stored codes
- USB connector for PC connection and installation data management by means of the WINPPCL software

MODEL	PROG2-USB 433	PROG2-USB 868
CODE	161006	161007
Frequency (MHz)	433.92	868.30

flash-prog

Quick programmer for phox transmitters



PLUS

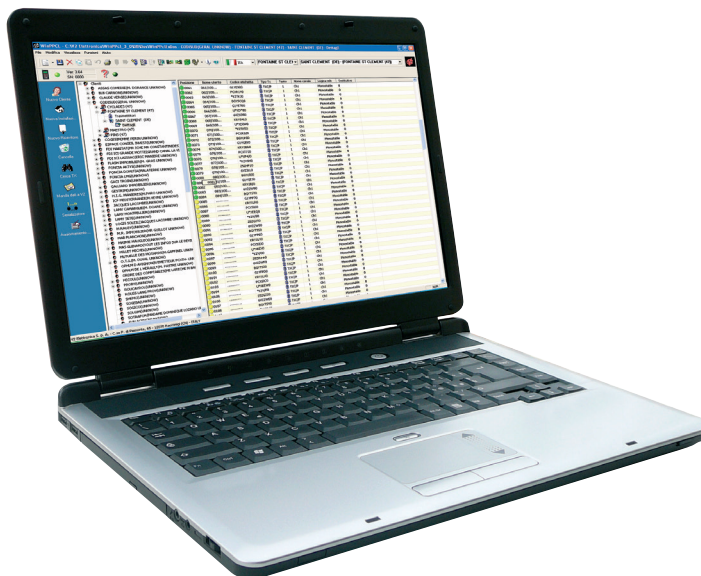
- Programming via radio of PHOX transmitters by simply placing the remote control on the programmer and proceeding with programming with Winppcl
- Dual frequency: enables programming 433.92 MHz and 868.30 MHz transmitters
- Direct connection to a PC via USB port
- Possibility to manage programming also via PROG2

MODEL	FLASH-PROG
CODE	161009



winppcl

Administration software



PLUS

WINPPCL software is a program allowing the storage, consultation and updating of all the data and all the settings of the systems by using a Data Base.

WINPPCL can be used both by itself and also when connected to the PROG2 portable programming device. In the former case, it is only possible to work with the Data Base, while in the latter case, all the V2 device read/write operations can be performed.

In order to be able to use WINPPCL, it is necessary to obtain a contract activation code from V2 which will allow the devices to be customized with their own client codes.

It allows the installers to optimise their time by programming all the V2 TRANSMITTERS AND ACCESSORIES directly in their own workshop.

The configuration settings are then simply transferred to the receivers or the memory devices using the PROG2 device and installed on the system on site.

It allows rapid activation of a new user thanks to the option to automatically generate a series of random codes and then downloading them onto the receiver.

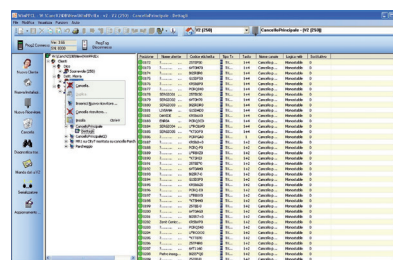
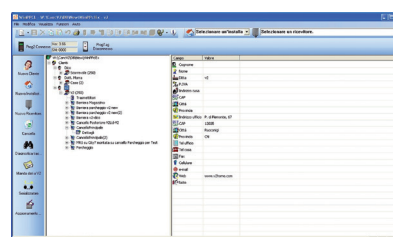
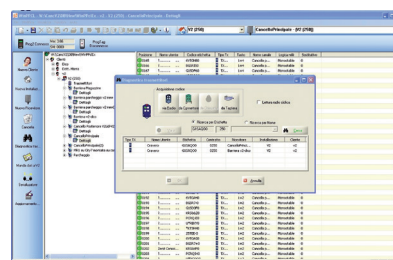
To activate a new user, simply program a blank transmitter with one of the codes already present in the memory.

WINPPCL also automatically checks the random codes generated in order to prevent preexisting codes from being created.

It allows printing and exporting of all information regarding users, transmitters, receivers and installations.

It allows tracing a transmitter within the database by displaying the receivers in which it is present.

It allows the generation of transmitters, capable of substituting a transmitter previously memorised in a WALLY/MR2 series receiver, via radio.



MODEL	WINPPCL
CODE	21A001



TRANSMITTERS AND ACCESSORIES

dev-r1

Miniaturized receiver to control a single phase asynchronous motor

433.92 - 868.30 MHz
Personal Pass



PLUS

- Power supply with extended range
- Very low power consumption in stand-by
- 433.92 MHz and 868.30 MHz version
- Compatible with Personal Pass transmitters
- Possibility to store up to 30 different codes
- Two wired inputs: up and down
- Integrated button for programming operations
- Sequential storage of transmitters
- Self-learning of transmitters managed by radio

dev-r2

Miniaturized receiver to control a load up to 500W

433.92 - 868.30 MHz
Personal Pass



PLUS

- Power supply with extended range
- Very low power consumption in stand-by
- 433.92 MHz and 868.30 MHz version
- Compatible with Personal Pass transmitters
- Possibility to store up to 30 different codes
- Two wired inputs: up and down
- Relay output with no-voltage contacts for loads of up to 500W
- Integrated button for programming operations
- Sequential storage of transmitters
- Self-learning of transmitters managed by radio



dev-t1

Personal Pass miniaturized transmitter

433.92 - 868.30 MHz
rolling code

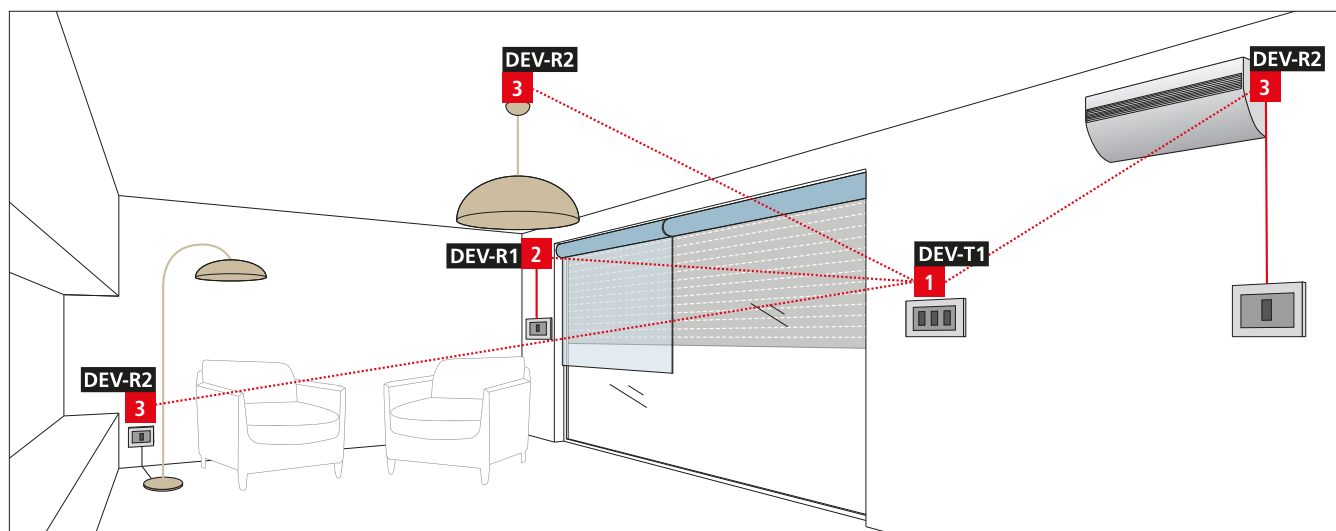


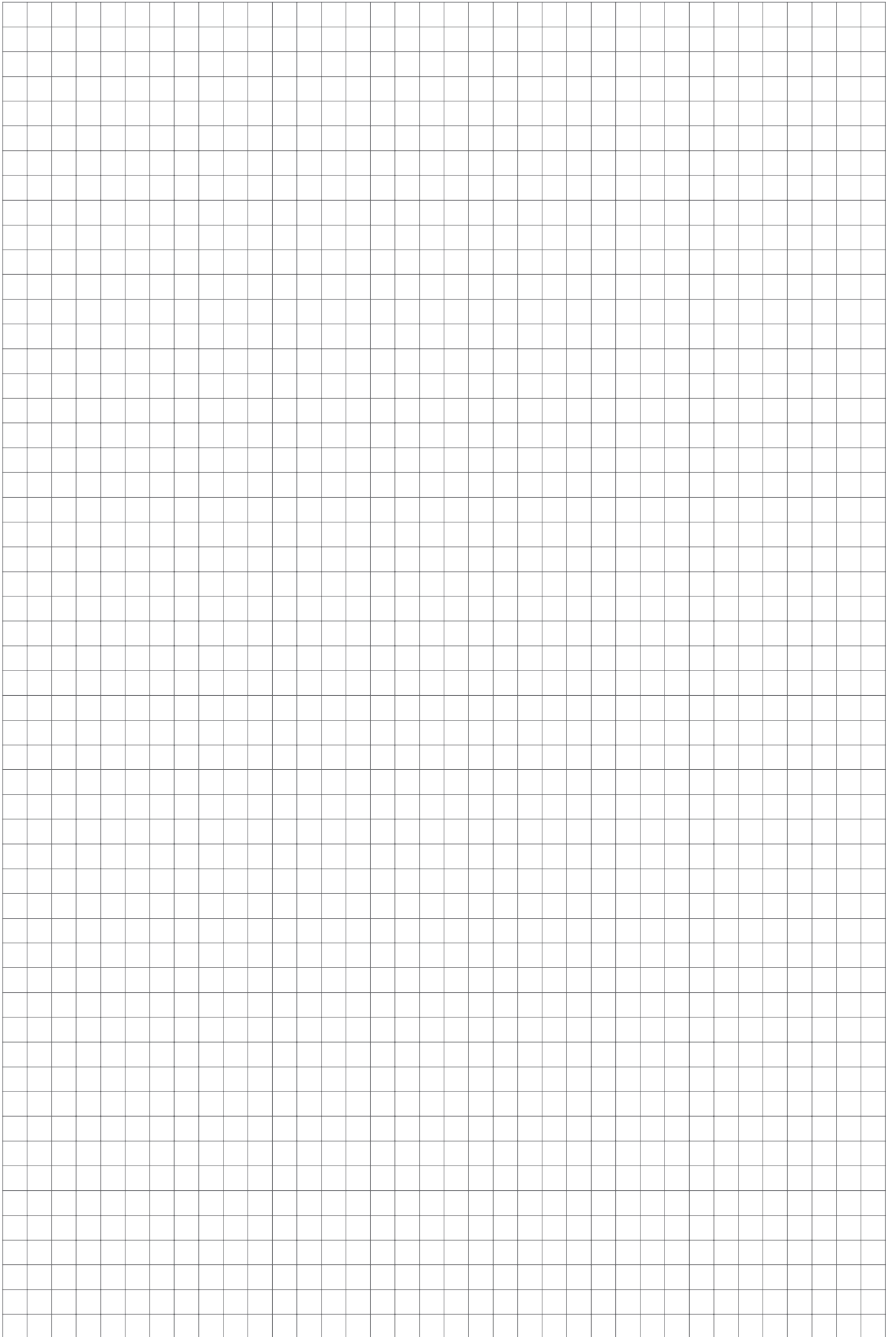
PLUS

- Power supply with extended range
- Very low power consumption in stand-by
- 4 wired inputs for N.O. buttons
- 433.92 MHz and 868.30 MHz version

TECHNICAL FEATURES

MODEL	DEV-R1-433	DEV-R2-433	DEV-T1-433	DEV-R1-868	DEV-R2-868	DEV-T1-868
CODE	12E105	11D021	10K022	12E106	11D022	10K023
Power supply (Vac - Hz)	85 ÷ 260 - 50/60	85 ÷ 260 - 50/60	85 ÷ 260 - 50/60	85 ÷ 260 - 50/60	85 ÷ 260 - 50/60	85 ÷ 260 - 50/60
Frequency (MHz)	433.92	433.92	433.92	868.30	868.30	868.30
Absorption in stand-by (mA)	0.25	0.25	0.15	0.25	0.25	0.15
Working temperature (°C)	-20 ÷ +60	-20 ÷ +60	-20 ÷ +60	-20 ÷ +60	-20 ÷ +60	-20 ÷ +60
Maximum operating time (s)	120	-	120	120	-	120
Dimensions (mm)	20.3 x 34.4 x 41	20.3 x 34.4 x 41	20.3 x 34.4 x 41	20.3 x 34.4 x 41	20.3 x 34.4 x 41	20.3 x 34.4 x 41





info@v2home.com - www.v2home.com



domotics & love